

## WEEKLY NEWSLETTER

Dear Parents/ Carers

Welcome to this week's newsletter. We have now seen off the darkest weeks of the year and spring is fast approaching. Thank you for taking the time to read this newsletter, please make a note of the important dates coming up.

### Key Updates for Families

#### Wednesday 5 February

Poetry Live Trip  
BSO Music Trip to Westlands

#### Thursday 13 February

Year 9 Parents Evening and KS4 Choices Fayre.

#### Monday 24 February

Year 11 Trial Exams- this will take place over two weeks. Please can all Year 11 parents ensure that any appointments or commitments are rescheduled to avoid clashing with the exams. This will be the final chance students have before the May final examinations.

#### Thursday 27 February

PTA Quiz night

#### Thursday 13 March

Year 7 Parents Evening.



31.01.25

NEXT WEEK  
ASSEMBLY  
FOCUS:

**Internet  
Safety**

### Key Dates

05/02/25  
Poetry Live Trip  
and BSO  
Music Trip to  
Westlands

13/02/24 Year  
9 Parents'  
Evening and  
KS4 Choices  
Fayre

Week  
Beginning  
24th Feb: Year  
11 Mocks

[Click here for  
Extra-Curricular  
Activities](#)

[Click here for  
term dates](#)



TRUTH



RESILIENCE



AMBITION



COMMUNITY



KINDNESS

### WEEKLY NEWSLETTER

#### Items to Celebrate

Since November, St Dunstan's School teaching staff have been embedding a new approach to teaching and learning. The Learning Cycle is intended to break down teaching into a consistent sequence of episodes. This enables students to follow the teacher and their learning journey. It also makes sure that students are given the opportunity to complete key tasks during the lesson to check on and consolidate their learning. I am very proud to say that we are the second school in the trust to fully adopt this methodology. We have also received lots of visits from our Trust partners, who are keen to see our fantastic teachers and students using the Learning Cycle to good effect. There is more information later in the newsletter, If you would like to find more information about the Learning Cycle, Episodes or rationale for its implementation.

As I have walked around the school this week, it has been great to see so many students proudly wearing their Bronze award for achieving 200 'On Track' Points. I have also had the pleasure to read and sign the Reward Cards given to students. These are intended to celebrate a student's effort, hardwork and dedication in lessons. Students are asked to get these signed by four significant adults in their lives; the teacher, tutor, headteacher and parents/carers. It has been wonderful to read the comments written by teachers and speak to the students about their achievements. Well done to you all.

Over the next few weeks we will be finalising the plans for our Spring term celebration assemblies and arrangements to recognise the school reaching the 100,000 'On Track' points threshold. These will take place on Friday 14 February. The school's current total for On Track points is 116,102 Points. Congratulations to every single student who has received rewards and recognition so far this term.



**TRUTH**



**RESILIENCE**



**AMBITION**



**COMMUNITY**



**KINDNESS**

# St Dunstan's School

GLASTONBURY

## WEEKLY NEWSLETTER

As you may be aware from correspondence sent earlier this week, St Dunstan's School is making significant changes to its Management Information System (MIS). This system is used to hold and report on student data including attainment, attendance, examinations and behaviour. We aim to move over to Arbor by the end of March and we will provide you with all the essential information that you will need to know in advance of this date. More information is available in the newsletter.

Thank You all for your continued support. Bring on Week 5!

Best wishes

P Balkwill



**TRUTH**



**RESILIENCE**



**AMBITION**



**COMMUNITY**



**KINDNESS**

# Year 9 Parents' Evening & Key Stage Four Choices Fayre

Year 9 Parents' Evening is on Thursday 13th February 2025 4pm - 6.15pm.

Bookings via Talaxy - open now!

From 6.15pm - 7pm we will be holding our Subject Fayre where staff are available for further details and any questions, choices booklets and information on the courses we offer.

There will also be a number of talks on the option process in the drama studio which you are free to join too.

If you need any assistance in using Talaxy, please email [secretary@stdunstansschool.com](mailto:secretary@stdunstansschool.com)

Don't forget  
parents'  
evening!



TRUTH



RESILIENCE



AMBITION



COMMUNITY



KINDNESS

# The Learning Cycle

From November 4th 2024, students in Years 7-11 have been introduced to the St Dunstan's Learning Cycle in all of their lessons.

The Learning Cycle is a six part lesson designed to reduce cognitive load for students and establish routines in order that students from all backgrounds and abilities can make the very best progress and truly reach their full potential every day.

The Learning Cycle uses up to date educational research and evidence of impact from high performing schools. It is broken into six key components-

1. **Do Now** - recall tasks that allow students to remember and practise previous knowledge and skills
2. **Engage** - linking the outcomes of the lesson to keywords they will need to use and the real world context of what they are about to learn
3. **Learn** - time to hear and take notes from the expert in the room, who will share key information, ideas and skills
4. **Build** - an opportunity to increase the depth of knowledge or skills they are gaining, with questions and practise
5. **Apply** - students work independently, practising the skills and expertise they have learnt, receiving feedback from their teacher and ensuring they can work through problems
6. **Review** - learners reflect on their progress, looking back at the new knowledge and skills they have gained, and evaluating their performance

This initiative is a Trust wide strategy to ensure learners are able to know more, do more and remember more over time, with St Dunstan's school taking the opportunity to lead the way in developing exemplar lesson resources and support materials.



TRUTH



RESILIENCE



AMBITION



COMMUNITY



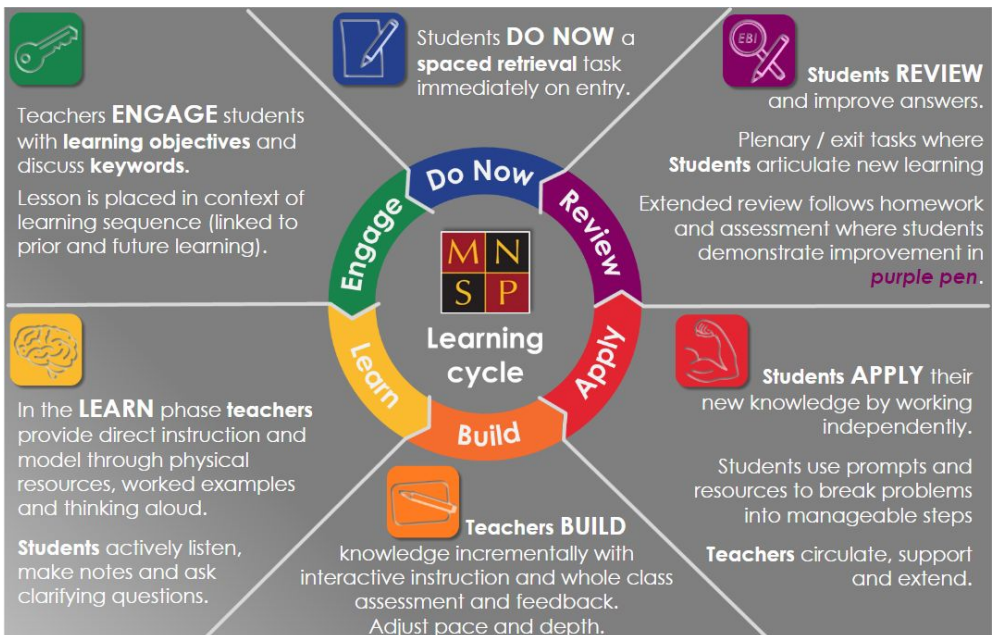
KINDNESS

# The Learning Cycle

Our expert teachers and subject leaders have collaborated with one another and external subject experts to ensure the Learning Cycle is consistent in all lessons. Students have fed back that they 'know what to expect in all their lessons'. Students have also reported back that they feel 'like they know where the lesson is going' and that they feel it is having a positive impact on their progress overall.

External visitors to our school, including Teaching and Learning and subjects leaders from within the Trust have been impressed by the calm and consistent manner in which our students focus throughout their lessons. They have also noted how the Learning Cycle is present in their exercise books.

We are looking forward to seeing the impact of the Learning Cycle on the progress of our students and the significant difference it will make to the learning of all students.



**TRUTH**



**RESILIENCE**



**AMBITION**



**COMMUNITY**



**KINDNESS**



# Midsomer Norton Schools Partnership

## Update on the Implementation of Arbor

Dear Parents and Carers

As part of our ongoing commitment to improving communication and streamlining processes within our schools, I am pleased to provide an update on the implementation of Arbor, our new management information system (MIS).

We are working diligently towards the planned rollout of Arbor on 1 April 2025. Significant progress has been made in preparing for this transition and we are confident that the system will bring numerous benefits to both the school and our families. Arbor is designed to enhance how we manage and share essential information, ensuring a more efficient and effective experience for all.

### Key Features for Families

Here are some of the ways Arbor will enhance your experience once fully implemented:

- **Access to Information:** View your child's attendance records, progress and key dates via the Arbor Parent Portal or app.
- **Improved Communication:** Receive updates, reminders, and messages directly to your registered email or app notifications.
- **Online Payments:** A simplified process for managing payments for school meals, trips, and other events will be available later in the new academic year 2025/26.

### Next Steps

As we move closer to the rollout date, we will be in touch again with detailed information about how Arbor will interface with parents and carers. This will include instructions on how to access and use the Arbor Parent Portal, as well as guidance on its key features. Our goal is to ensure a smooth transition and to provide you with the support needed to make the most of this new system.



**TRUTH**



**RESILIENCE**



**AMBITION**



**COMMUNITY**



**KINDNESS**



# Midsomer Norton Schools Partnership

## Update on the Implementation of Arbor

### Support and Feedback

We understand that adopting a new system can bring questions and we are here to help. If you encounter any issues or need assistance, please do not hesitate to contact your school office.

Additionally, we welcome your feedback as we continue to fine-tune Arbor to meet the needs of our school communities. Thank you for your support as we work towards this important milestone. We are confident that Arbor will play a significant role in strengthening the connection between school and home.

We will keep you updated as we get closer to April 1st 2025 Go-Live date.

Kind regards

Mr A Williams  
CEO



**TRUTH**



**RESILIENCE**



**AMBITION**



**COMMUNITY**



**KINDNESS**



# PARENTS –

GUIDING OUR CHILDREN THROUGH THEIR EDUCATION IS ONE OF OUR GREATEST ROLES.



# MOMENTS MATTER,

# ATTENDANCE COUNTS.

Consistent support and motivation from you plays a pivotal role in their success, and this begins with school attendance – that isn't just about adhering to school rules; it's about shaping their future, one day at a time.

If your child is struggling with school attendance, our tips overleaf can help you help them. Or if you have any concerns contact your child's school.



TRUTH



RESILIENCE



AMBITION



COMMUNITY



KINDNESS

Dear Parents/Carers

Thank you to all parents for your support to ensure that your child attends school as regularly as possible.



We know that sometimes our pupils cannot come to school because they are really unwell - and that's the right thing to do for them and other students. Medical advice is clear however that children with mild illness will often be well enough to attend - for example if they have a cough, or cold, without a temperature. The NHS guidance [is my child too ill for school? - NHS \(www.nhs.uk\)](https://www.nhs.uk) is designed to support parents in their decision making about mild illness.

We also know that pupils fall behind their friends and classmates when they miss school. At St Dunstan's School we want the amount of missed education to be reduced as much as possible. We believe that our community is stronger together, with all of our pupils in school, on time, every day. We are building life skills, life-long friendships and preparing your child for future success.

The advantages of good attendance are numerous:

- **Improved Academic Performance:** Regular attendance helps children stay up-to-date with their lessons and reduces the likelihood of falling behind.
- **Social Development:** Consistent attendance allows children to form and maintain friendships, enhancing their social skills and sense of belonging.
- **Routine and Structure:** Attending school regularly helps children develop a sense of routine and structure, which is beneficial for their overall development.
- **Increased Opportunities:** Students who attend school regularly are more likely to participate in extracurricular activities and special events, enriching their school experience.
- **Better Mental Health:** Being part of the school community can boost children's confidence and self-esteem, contributing to better mental health.

We also know that parents/carers can have a significant effect on good attendance and we would really appreciate your continued help and support ensuring that your child comes to school every day so that they can get the best possible outcomes.



**TRUTH**



**RESILIENCE**



**AMBITION**



**COMMUNITY**



**KINDNESS**

We have planned our rewards and recognition for attendance in order to recognise a wide range of student successes and achievements as well as take into account occasions when absence is unavoidable. Our aim is to encourage all students to secure high attendance across the year and in doing so, maximise their chances of success in school. This will include the following-

**Improved attendance-** students with improved attendance across a term will receive a letter from our Attendance Champion and 10 'On Track' points. The most improved students will also be recognised in our celebration assemblies

**Termly attendance target-** all students who have met or exceeded our termly attendance target (96%) and 'On Track' points thresholds, will be invited to our end of term celebration events

**Exceptional attendance across the year-** all students who are 98% or above at the end of each term, will receive a letter from the Headteacher, 50 'On Track Points' and recognised in our celebration assemblies

**Monthly 100% attendance** - if a student achieves 100% in a calendar month, they will receive a reward card and they will be entered into a prize draw to win Amazon vouchers. Students in the 100 club will also be celebrated on our celebrations board and awarded 50 'On Track Points'

If you have any further questions or queries, please do not hesitate to make contact via main reception. Thank you to all parents/carers for your continued support.

Yours sincerely

Ms K Haden

Deputy Headteacher



TRUTH



RESILIENCE



AMBITION



COMMUNITY

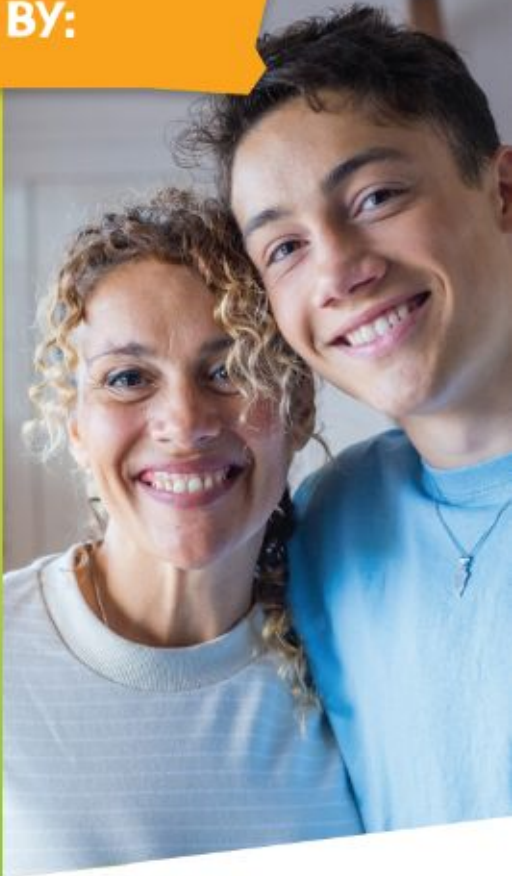


KINDNESS



## YOU CAN HELP YOUR CHILD BY:

- ensuring your child understands the importance of excellent attendance and punctuality.
- asking about school work and encourage them to get involved in school activities.
- discussing any problems they may have and inform their Form Tutor to pass on concerns.
- not allowing them take time off school for minor ailments – particularly those which would not prevent you from going to work.
- arranging appointments after school hours, at weekends or during the holidays, to prevent disruption to your child's education and to the school.
- being open and willing to work with us to improve your child's attendance.



If you are concerned about your child's school attendance, it's best to contact their school first. Our dedicated Attendance Team are on hand to support pupils and families.

For more information about school attendance visit our website: [www.midsomernortonschoolspartnership.com/attendance](http://www.midsomernortonschoolspartnership.com/attendance)

**We're here to help if you need it.**



TRUTH



RESILIENCE



AMBITION



COMMUNITY



KINDNESS



# Collaborate Digital



This week the whole school worked on how to make sure we're taking care of our personal safety. Each year group got an assembly from Collaborate Digital, an association run by the Somerset Violence Reduction Partnership, in collaboration with the Council and the Police.

The students learned really important ways to manage personal safety such as how to spot the signs of violence before it happens, how to be an active bystander, standing up for things like the harassment of women on the street, that often leads to violence and jeopardises personal safety. Students also learned how to avoid online issues spilling over into real life and becoming violent, amongst many other important life lessons about being safe and standing up for those that may need help.

It was a really useful and important session. In addition, thirty Year 9 students did a workshop, making podcasts, but more on that when the podcasts are edited! Thanks to Collaborate Digital for coming to see us.



**TRUTH**



**RESILIENCE**



**AMBITION**



**COMMUNITY**



**KINDNESS**



## Blue Peter Music Badges



Students have been super excited this week to receive their Music Blue Peter badges. Students are awarded badges for their passion for Music and their skills on their chosen instruments.

We sent off applications a while ago, and these brilliant badges which have been designed by Ed Sheeran have been arriving in the post at students' houses this week.

Students are proudly wearing them on their St Dunstan's uniform.

If you play an instrument, and would like to apply for your Music Blue Peter badge, please collect an application form from the Music department and return it to Mrs Hopton and you can soon be the proud owner of one of these badges.



TRUTH



RESILIENCE



AMBITION



COMMUNITY



KINDNESS



## MNSP Book Awards Club



This week our MNSP Book Awards Club started! The librarians across the Trust have set up a book awards scheme, and we'll all be taking part. We have 15 readers ready to embark on this journey, reading six books each and then voting on their favourite. We will then attend the awards ceremony at Frome College in May, with authors and all of the other schools involved, where we will announce the winner. We chose our first books this week, so we'll see how quickly we can get through all six books.

The other schools taking part are: Somervale, Norton Hill, Frome College, Oakfield Academy, Hayesfield, St Mark's, Beechen Cliff and Buckler's Mead.



**TRUTH**



**RESILIENCE**



**AMBITION**



**COMMUNITY**



**KINDNESS**



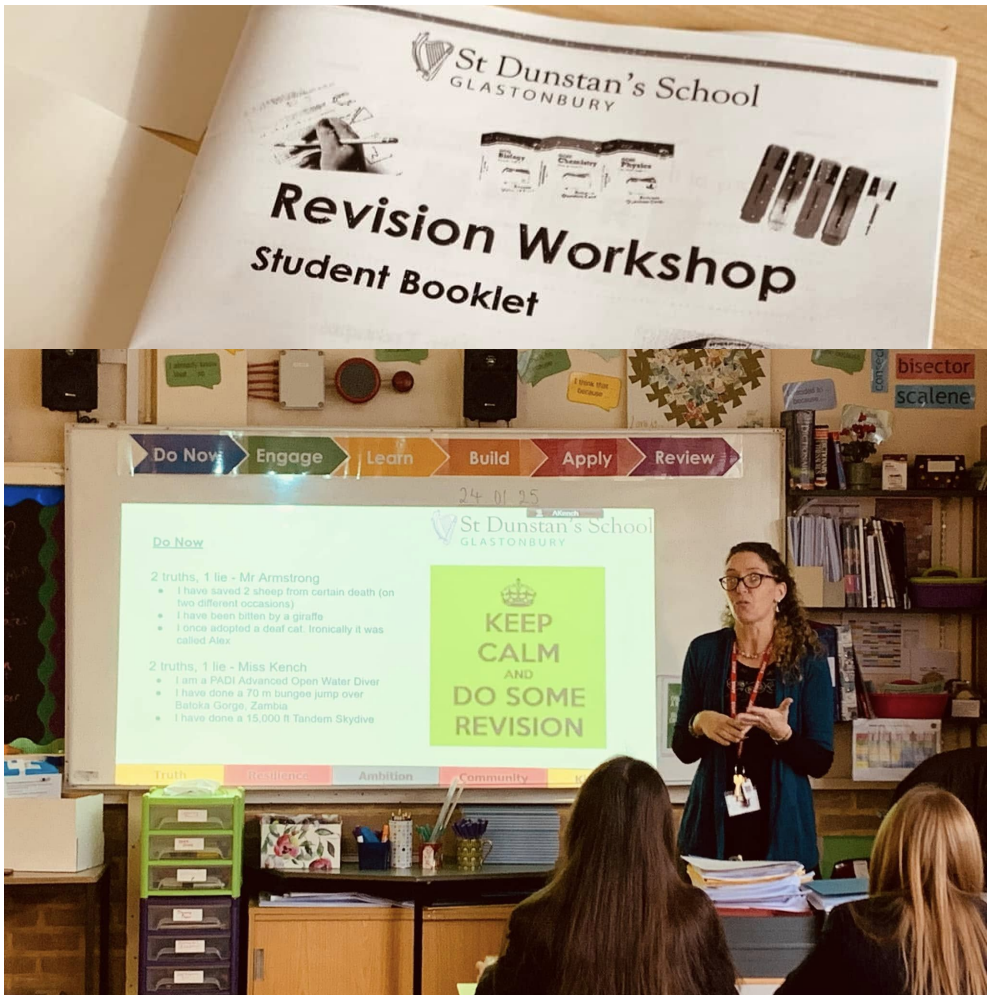
# Year 11 Revision Workshops



Year 11 have been doing brilliantly, attending revision workshops to support their revision across the curriculum. Last week's session included tips on how to plan for effective revision as well as some methods which have been tried and tested.

Our ambitious students have begun to step up their revision in intensity this term as we count down to the mocks next month and finally to the summer exams!

Good luck Year 11; you can do it.



TRUTH



RESILIENCE



AMBITION



COMMUNITY



KINDNESS





# Chinese New Year

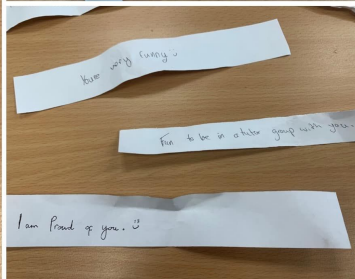
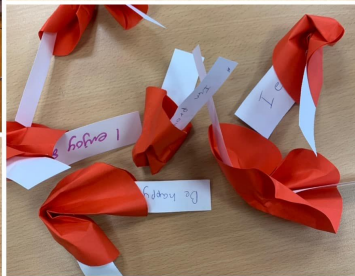
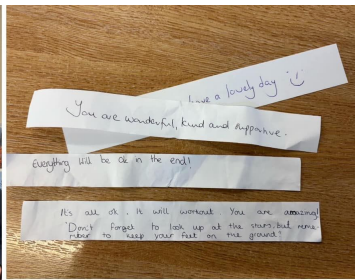


Gong Hei Fat Choy! Happy Chinese New Year to you from Year 8.

Today 8KGR and 8JMA made fortune cookies for each other, with an uplifting message to their fellow tutees.

In a twist on the traditional cookies, these were made by hand with paper and then artfully crimped into shape and stuck with tape. It was lovely to read the thoughtful messages that the students anonymously created for each other.

If you're celebrating tonight, have fun and may the luck of the wood snake be with you in 2025!



TRUTH

RESILIENCE

AMBITION

COMMUNITY

KINDNESS

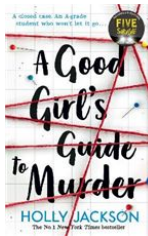
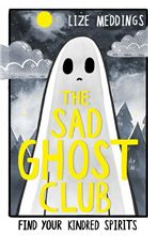
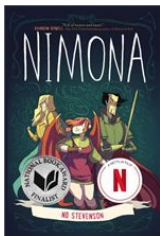
St Dunstan's Library presents...

# THE BOOK NOOK



We have a HUGE thank you to give to Glastonbury Festivals who donated £500 to the library to buy new books to help support our students! We are appreciative beyond words because its thanks to the generosity of the community that we're able to make our library a vibrant, exciting place. We spent the money on almost 70 graphic novels and gripping fiction, the key areas that needed the most updating. Loads of the books have already been checked out, and excitement is high. Thank you Glastonbury Festival!! You can see by the happy faces how much value this adds to our school!

## Popular loans this week:



TRUTH



RESILIENCE



AMBITION



COMMUNITY



KINDNESS

# PTA Quiz Night

Tickets are available on ParentPay now for St Dunstan's PTA's 4th annual quiz!

**Raffle Request: 'Do you have an unwanted Christmas presents? The PTA would love to have it for a raffle prize at the quiz. Any donations can be left at school reception at any time. Thanks in advance!'**

A dark blue poster with a yellow border. At the top, a string of white lights hangs across the frame. Below the lights, the text 'ST DUNSTAN'S COMMUNITY PTA PRESENTS' is written in white. The word 'QUIZ' is written in large, glowing yellow-outlined letters, and 'NIGHT' is written below it in smaller, glowing yellow-outlined letters. Below this, the date 'THURSDAY 27TH FEBRUARY 2025' is written in glowing yellow-outlined letters. Further down, the event details are listed in white text: '6.30 pm - doors open.', '7pm kick off', '£6 per adult, £3 per child [children must be accompanied]', and 'Teams of 8 max'. Below that, it says '1st drink free, nibbles on the table, BAR!'. At the bottom, the location 'ST DUNSTAN'S SCHOOL, WELLS ROAD, GLASTONBURY, BA6 9BY' is listed, followed by the website '///FRIES.REFLECTED.EVIDENTLY', and the ticket information 'TICKETS ON PARENTPAY OR EMAIL STDUNSTANSCOMMUNITYPTA@GMAIL.COM'. The background of the poster features a stylized illustration of a person's head and shoulders in yellow and grey, with a hand holding a pencil on the right side.

TRUTH



RESILIENCE



AMBITION



COMMUNITY



KINDNESS

# Careers Events



Join us at our

# OPEN EVENING

## THU 13 FEB • 5.30-8PM

A Levels • T Levels  
Professional & Technical Courses  
Apprenticeships  
Supported Learning  
Higher Education  
Adult Courses

Apprenticeship Talk  
6.30PM

REGISTER  
ONLINE  
TODAY



[strode-college.ac.uk](http://strode-college.ac.uk)

# OPEN DAY

[www.btc.ac.uk](http://www.btc.ac.uk)

REGISTER  
NOW!

CANNINGTON CAMPUS  
Saturday 25 January | 10am - 1pm

BRINGING OUT YOUR BEST



BRIDGWATER  
& TAUNTON  
COLLEGE



TRUTH



RESILIENCE



AMBITION



COMMUNITY



KINDNESS

## Local Events



# YOUNG ARCHERS BEGINNER'S COURSE

**Saturday 26 April  
(and the following three Saturdays) 12.30 - 2.30pm**

**Price: £70 per person**

**All equipment will be provided for the duration of the course**

This course will introduce you to the sport and teach you how to shoot safely. When you complete the course you will receive a certificate confirming that you have completed a Beginners Course in target archery – allowing you to join any archery club.

The course runs for **four** weekly consecutive sessions at our club within the Wells Sports Ground.

Please note that under-18s must be accompanied by a parent/guardian to all sessions. The parent can also sign up for the course at the same time.

Archery is very inclusive and can be adapted for age and disability . If you do have any concerns about your ability to join a Beginners group, please contact us - [secretary@wellscityarchers.com](mailto:secretary@wellscityarchers.com)

**Book now at:**

<https://wellscityarchers.com/beginners-form/>



TRUTH



RESILIENCE



AMBITION



COMMUNITY



KINDNESS

# Local Events

## YMCA BRUNEL GROUP

BATH | BRISTOL | WILTSHIRE  
EAST & SOUTH SOMERSET

# GLASTONBURY YOUTH CLUBS

**An exciting opportunity to  
meet new friends & join in  
fun activities.**

Mondays 7-9pm: Windmill Hill

Fridays 7-9pm: Red Brick

Term-time only | Entry £1



### Weekly youth clubs & extra events and trips

Hang out with your friends | Meet new people | Activities & games | Free food

we  
welcome all  
young  
people  
aged 10-19



let's all  
catch up,  
have fun  
and support  
each other!

To sign up please access the consent form by scanning the QR code or via the link  
<https://forms.gle/AvNMEj3MqWZv3rux5> Consent must be provided by a parent/carer

### Contact us:

Glastonbury: [SiobhanWhite@ymca-bg.org](mailto:SiobhanWhite@ymca-bg.org)  
[www.ymca-bg.org](http://www.ymca-bg.org)

### Find us:

St Edmunds Hall, Chinnock Road, Glastonbury, BA6 8EW  
Red Brick Building, Moorland Road, Glastonbury, BA1 9FT

# YMCA

Here for young people  
Here for communities  
Here for you



TRUTH



RESILIENCE



AMBITION



COMMUNITY



KINDNESS

# ON TRACK

<p><b><u>O</u>rganised &amp; Proactive</b></p>	<p>Bringing the correct equipment, kit and uniform Meeting deadlines Working on tasks independently and completing homework to a high standard</p>
<p><b><u>N</u>eat &amp; Tidy work</b></p>	<p>Smart, well presented books demonstrating your best work</p>
<p><b><u>T</u>enacity</b></p>	<p>Trying your hardest, rising to challenges, having a 'can do' attitude, working out solutions and taking ownership of your learning</p>
<p><b><u>R</u>eady, Respectful and Responsible</b></p>	<p>Being a role model by consistently demonstrating our basic expectations</p>
<p><b><u>A</u>nswering, reading and listening like an expert</b></p>	<p>Sophisticated full sentence answers using technical terms Following along, tracking the text and ready to read aloud in class. Reading widely and for pleasure Listening and considering the views of others Taking in turns to respond</p>
<p><b><u>C</u>ontributing to the class</b></p>	<p>Playing an active role in every lesson Attention to the speaker, sat up straight, arms still, pens down Teacher focused</p>
<p><b><u>K</u>indness &amp; Community minded</b></p>	<p>Caring, polite, looking after one another and the site Speaking with kindness and respect Supporting staff and other students to create a positive learning environment for all</p>



TRUTH



RESILIENCE



AMBITION



COMMUNITY



KINDNESS